

Elite Fit – Racer Cut

Aerodynamic design with next to skin feel. Optimized cut for on-bike position. **the racer fit is 1 size smaller the standard fit.



Mondo 2 Jersey (Improved)

1. CfJ' Mondo: Four-way stretch micro-filament known for its softness and comfort
2. Power Mesh Four-way stretchability, extreme breathability and quick drying.
3. CfJ' Speedtech One of the most aerodynamic fabrics developed. Made of a dimpled mesh construction, this fabric is light, breathable and chlorine-resistant
4. Tri Rev: Compression and support

Full length hidden zip

Front length: 21 "/53 cm

Pre-shaped shoulders

Aero single-layer, laser-cut band at arm 3 back pockets with reflective trim

1 back zippered pocket

Mesh side panels and underarm yokes Signature silicone gripper at hem

*coldblack® treatment reflects UV rays for cooling



Lazer Grip Bib Shorts (Improved)

1. Power + LYCRA® fiber: Our most popular compressive fabric is designed to fit muscle shape and provide maximum support for muscular fibers.
2. Pro + LYCRA® fiber: Support and shape recovery
3. Carbon-X Mesh: Made with carbon fibers, its compressive properties help blood circulation to increase resistance to fatigue.
4. Power Mesh: Four-way stretchability, extreme breathability and quick drying.
5. LGripper: Italian trim

Partly sublimated

Carbon-X and Power Mesh bib straps Lined at lower back

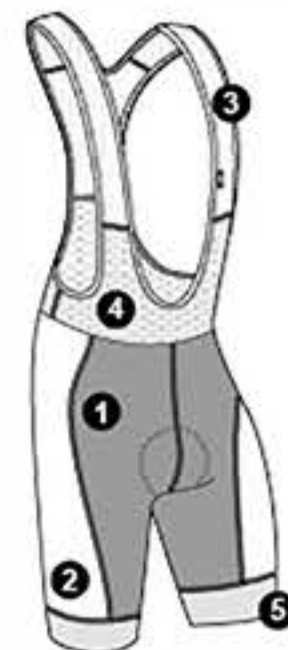
Seamless inner leg

Gripper leg band

Flatlock seams

Stretch trim and 1 back pocket on bib straps

Men's inseam: 10.5"/26.5 cm
Women's inseam: 9.5"/24.2 cm



Performance Fit – Standard Cut
Close to the body. Performance cut with comfort in mind.



Slick 2 Jersey (New)

1. Zircon: its slick construction and lightness provide the fabric with good moisture-wicking properties.
2. CB' Mondo: Four-way stretch micro-filament known for its softness and comfort
3. AirFit Mesh: The semi-opaque structure and lightness of the mesh provide comfort, flexibility and excellent moisture control.

Full length hidden zip
 CB Mondo sleeves and collar
 3 back pockets with reflective trim AirFit mesh side panels Signature silicone gripper at hem
 Front length: 22"/56 cm
 Aero single-layer, laser-cut band at arm 1 back zippered pocket



Equipe Pro Jersey

- A Carbon Ion: Ultra light fabric, quick drying and antiodor The addition of carbon enhances blood circulation and procures antistatic properties.

Full length hidden zip
 Front length: 22"/56cm
 3 back pockets with reflective trim Airfit Mesh side panels and sleeve yokes Flatlock seams
 Elastic at hem

Power Bib Shorts

1. Power + LYCRA® fiber: Our most popular compressive fabric is designed to fit muscle shape and provide maximum support for muscular fibers.
2. Pro + LYCRA® fiber: Support and shape recovery
3. Power Mesh: Four-way stretchability, extreme breathability and quick drying. Bib

Partly sublimated
 Lined at upper back
 Seamless inner leg
 Powerband
 Flatlock seams
 Bib: Stretch trim and 1 back pocket on bib straps



Elite Fit – Racer Cut

Aerodynamic design with next to skin feel. Optimized cut for on-bike position. **the racer fit is 1 size smaller the standard fit.



Superlight Vest

1. Super Light Dry Water repellent and windbreaking.
2. Power Mesh: Four-way stretchability; extreme breathability and quick dryin

Full length zip with garage and inner flap Front length: 22 /56 cm

Power Mesh side panels and back

3 back pockets with reflective trim Overlock seams

Stretch trim at collar, armholes and hem Front reflective piping

Performance Fit – Standard Cut

Close to the body. Performance cut with comfort in mind.

Prolight Vest

1. Microzone Breathable and windbreak,ng.
2. Ught Micro-Airdry" : Made of small honeycombs to increase airflow and wick moisture

Full length two-way zip with garage and inner flap Front length:24/61 cm <1123"/58cm i

3 back pockets with reflective trim

Overlock seams

Stretch trim at armholes

Signature silicone gripper at sides and rear hem



Performance Fit – Standard Cut
Close to the body. Performance cut with comfort in mind.

Peak Jacket (New)

1. Extenz 3L 4-way stretch 3-ply waterproof, windproof and breathable softshe/1.
2. Heatmaxx: Stfetchability and thermoregulation_

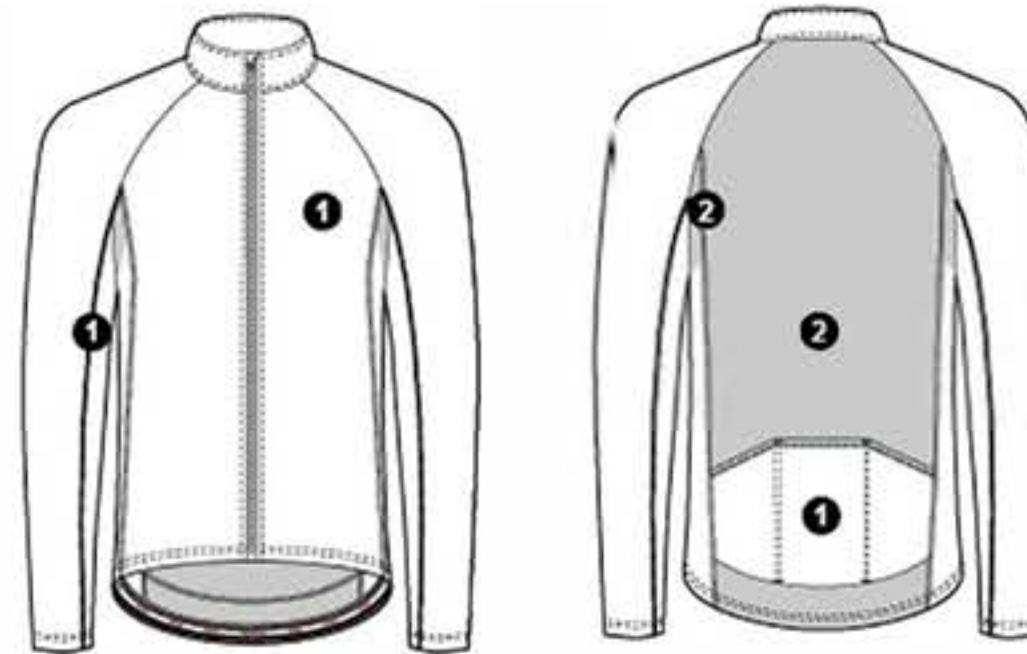
Partly sublimated

Full length zip with sublimated garage and inner flap Front length: 24"/61 cm

3 angled back pockets with reflective accent Overlock and coverstitch seams

Signature silicone gripper at hem

Front and back reflective accents



Sleeveless Jersey

1. Diamond Light textured construction that offers ventilation and very good moisture transfer

15"/38 cm invisible zip

Front length: 23" /58 cm , | 22" /56 cm | 3 back pockets

Stretch trim at armholes

Elastic at hem



Performance Fit – Standard Cut
Close to the body. Performance cut with comfort in mind.

MTB Jersey (Long Sleeve)

1. Light Micro-Airdry' Made of small honeycombs to increase airflow and wick moisture.
2. Pro + LYCRA® fiber: Support and shape recovery.

Fully sublimated
V-neck opening with tab
Raglan sleeves
Side panels
Overlock seams





Racer Cap

NEW

1. Zircon: Its slick construction and lightness provide the fabric with good moisture-wicking properties.
2. Microzone®: Breathable and windbreaking.

Overlock seams
Elastic at back for optimal fit
Visor made of plastic for best washing results



Neck Gaitor

1. ThermaSoft 180: Stretchability and thermoregulation.

Overlock seams
Unlimited ways to wear



Gloves

1. Pro + LYCRA® fiber: Support and shape recovery.

Sublimated LYCRA® fiber back
One-piece Biogel progressive padding palm
Patented Ergo Air® concept
X-Vent ventilation
Pullers at fingers
Slip-in design
Microfleece thumb



Arm Warmers

1. Thermo Stelvio: Retains body heat.

Biceps silicone grippers
Flatlock seams





Knee Warmers

1. *Thermo Stelvio: Retains body heat.*

Thigh silicone grippers
Flatlock seams

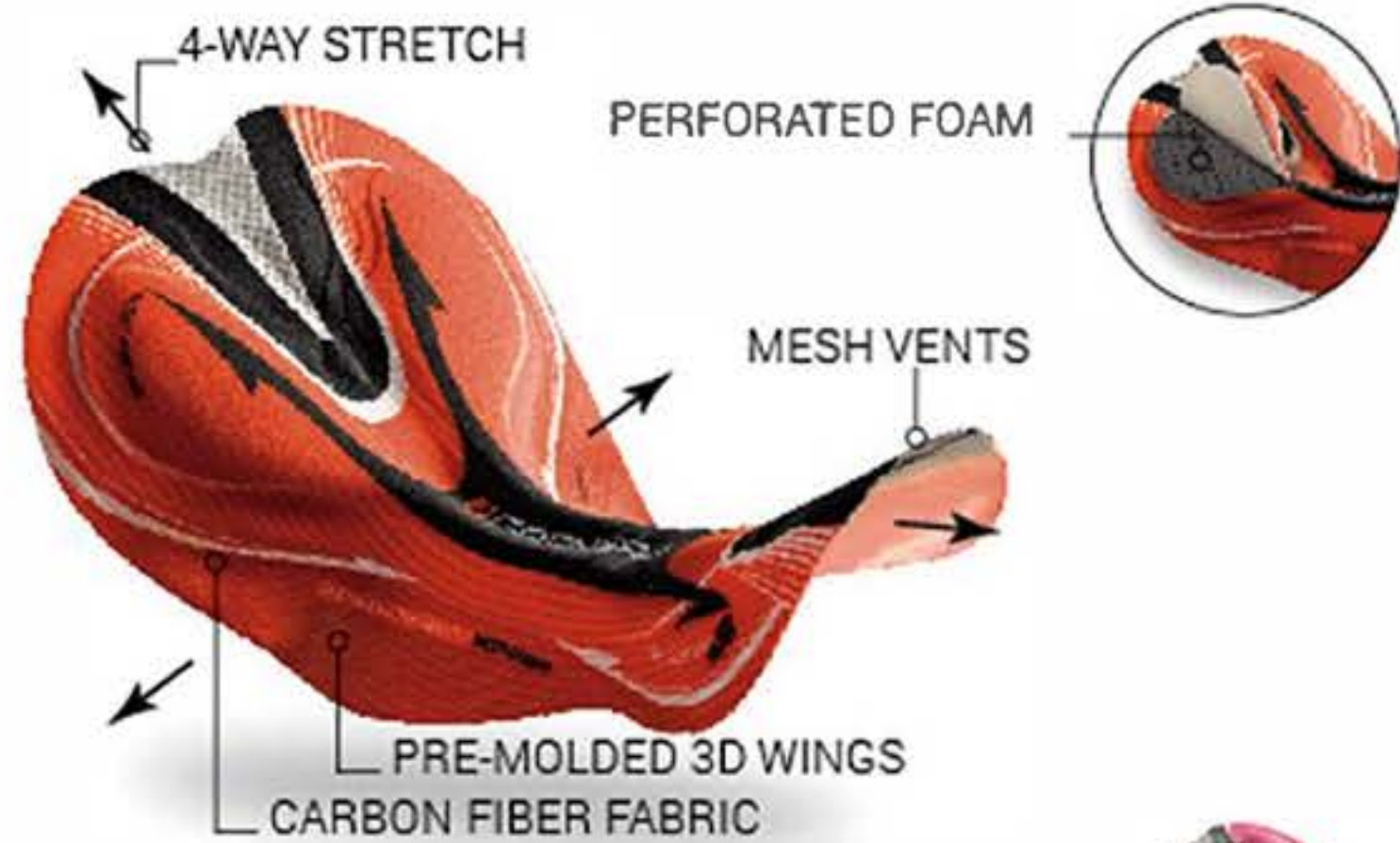


Leg Warmers

1. *Thermo Stelvio: Retains body heat.*

Thigh silicone grippers
Flatlock seams





Beveled Edge Molding



High-density perforated memory foam

FITS THE BODY LINES

The innovative 5Motion design combines 3D preshaped wings and a deep slit at the back bridged by vented mesh to allow for multidirectional motion and amazing comfort.

Developed with B.E.M. (Beveled Edge Molding) high-density perforated memory foam. This technology eliminates drastic drops of heights from one area to another, resulting in a smooth transition without pinching points to eliminate chafing.



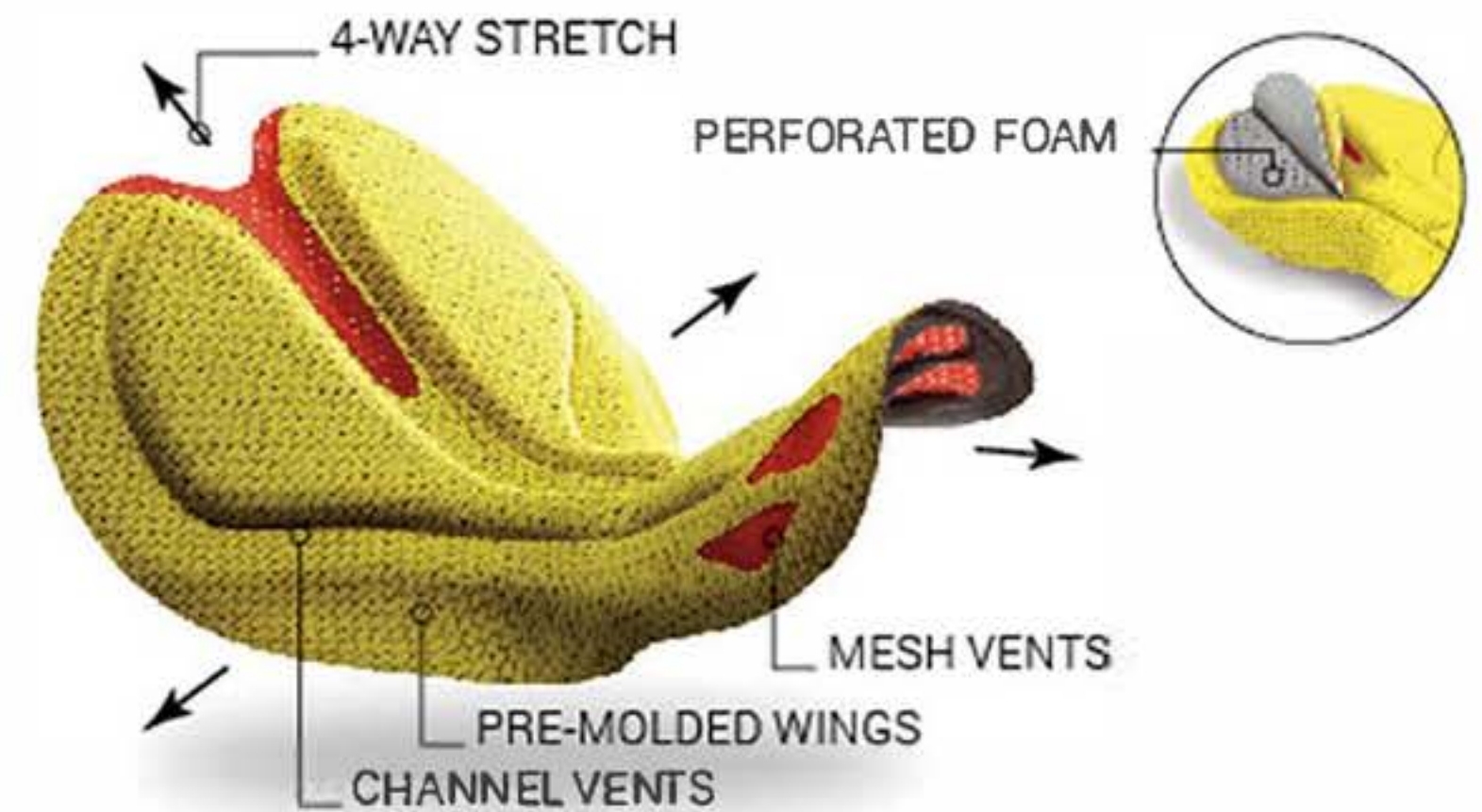
MEN



WOMEN



ARTICULATED CHAMOIS



Stretch mesh



High-density perforated foam

ARTICULATED CHAMOIS

The innovative 4Motion design combines 3D preshaped wings and a deep slit at the back bridged by vented mesh to allow for multidirectional motion and amazing comfort.

4 additional mesh vents at the front for ventilation. Multi-thickness perforated high-density foam for better moisture evacuation.



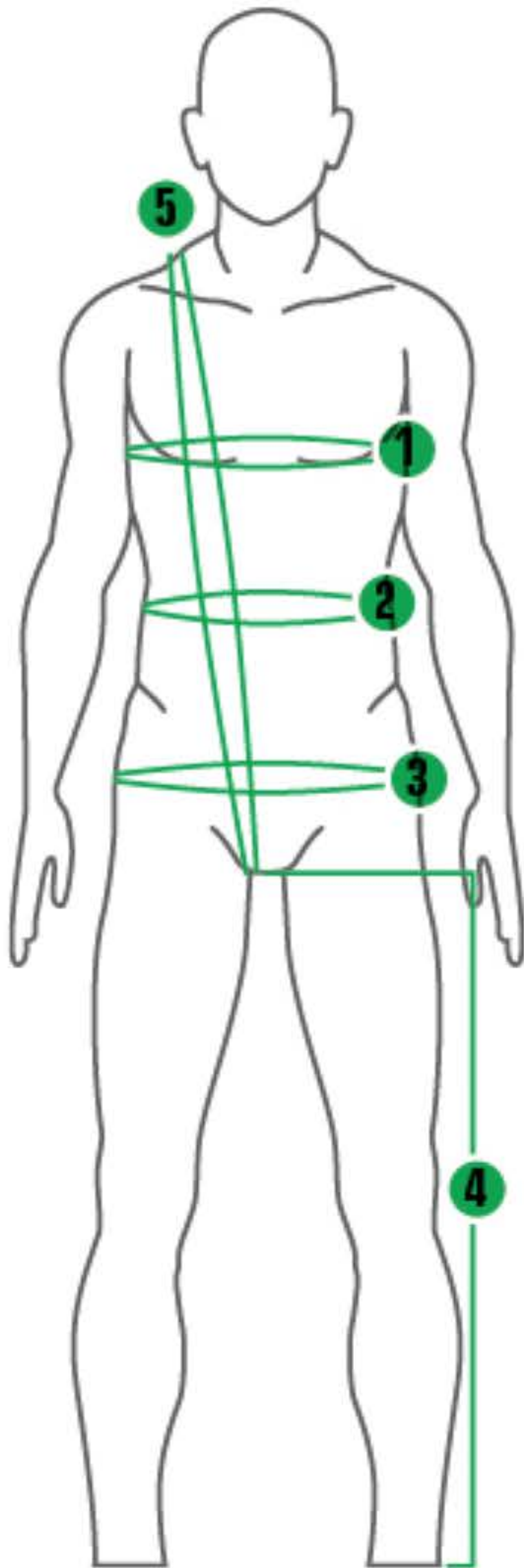
MEN



WOMEN



ARTICULATED CHAMOIS



MEN'S / UNISEX SIZING	3XS		XXS		XS		S		M	
	IN.	CM	IN.	CM	IN.	CM	IN.	CM	IN.	CM
1 CHEST	31-33	79-84	33-35	84-89	35-37	89-94	37-39	94-99	39-41	99-104
2 WAIST	26-27	66-69	27-29	69-74	29-31	74-79	31-33	79-84	33-35	84-89
3 HIPS	31-33	79-84	33-35	84-89	35-37	89-94	37-39	94-99	39-41	99-104
4 INSEAM	29	74	30	76	30	76	31	79	32	81
5 BODY LENGTH	58	147	60	152	62	157	64	163	66	168

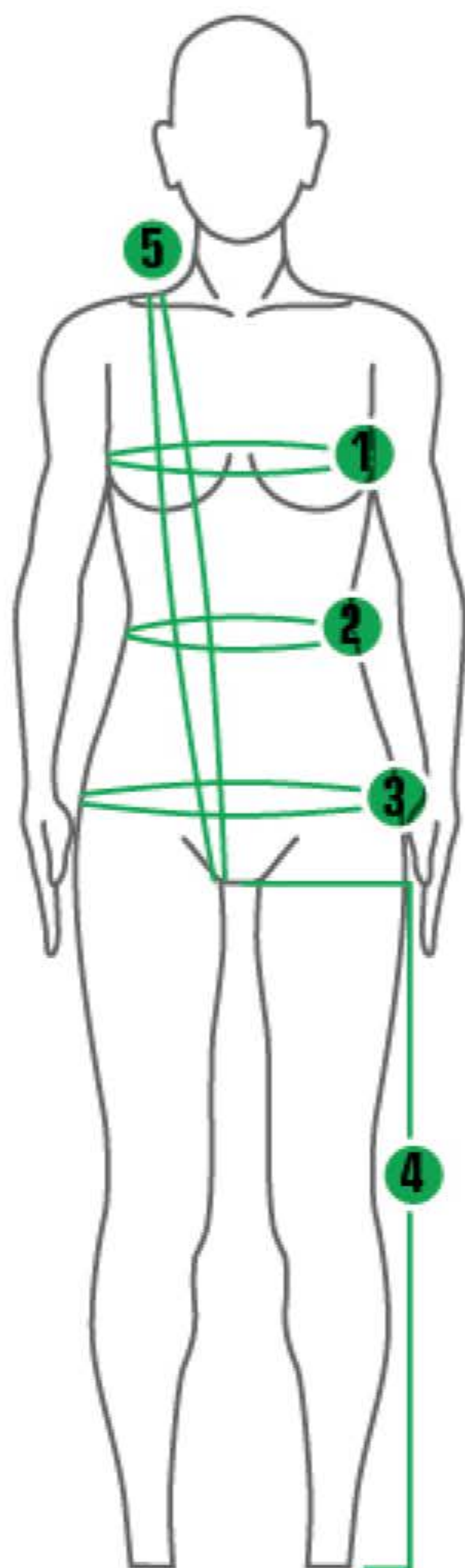
L		XL		XXL		3XL	
IN.	CM	IN.	CM	IN.	CM	IN.	CM
41-43	104-109	43-45	109-114	45-47	114-119	47-49	119-124
35-37	89-94	37-39	94-99	39-41	99-104	41-43	104-109
41-43	104-109	43-45	109-114	45-47	114-119	47-49	119-124
33	84	33	84	33	84	33	84
68	173	70	178	71	180	72	183

AERODYNAMICS

RACER FIT (SLIM FIT)
 Aerodynamic design with next to skin feel. Optimized cut for on-bike position. The Racer Fit is 1 size smaller than the Standard Fit.

PERFORMANCE

STANDARD FIT
 Close to the body. Performance cut with comfort in mind.



WOMEN'S SIZING

	XXS		XS		S		M		L	
	IN.	CM	IN.	CM	IN.	CM	IN.	CM	IN.	CM
1 BUST	27-29	69-74	29-31	74-79	31-33	79-84	33-35	84-89	35-37	89-94
2 WAIST	24-25	61-64	25-26	64-66	26-27	66-69	27-29	69-74	29-31	74-79
3 HIPS	31-33	79-84	33-35	84-89	35-37	89-94	37-39	94-99	39-41	99-104
4 INSEAM	28	74	29	74	30	76	31	79	32	81
5 BODY LENGTH	54	137	56	142	58	147	60	152	62	157

*Buttocks are measured 4 inches below the waist.
 *Measurements are taken wearing a sports bra.

XL		XXL		3XL	
IN.	CM	IN.	CM	IN.	CM
37-39	94-99	39-41	99-104	41-43	109-114
31-33	79-84	33-35	84-89	35-37	89-94
41-43	104-109	43-45	109-114	45-47	114-119
32	81	32	81	32	81
64	163	65	165	66	168

WOMEN'S SIZES IN MEN'S / UNISEX STYLES

WOMEN'S SIZE	XXS	XS	S	M	L
MEN'S/ UNISEX EQUIVALENT	=	XXS	XS	S	M
			XL	XXL	3XL
			L	XL	XXL

